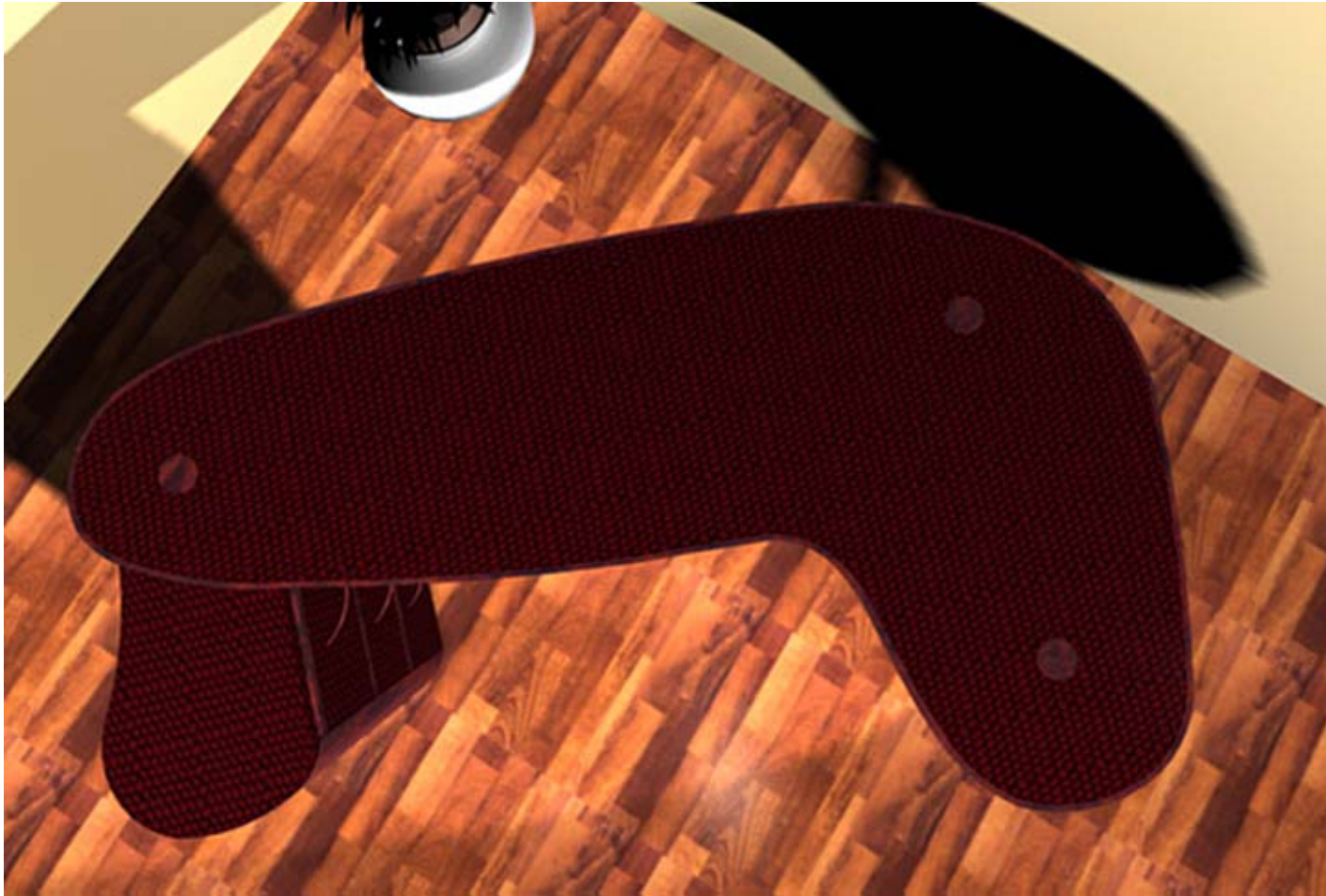


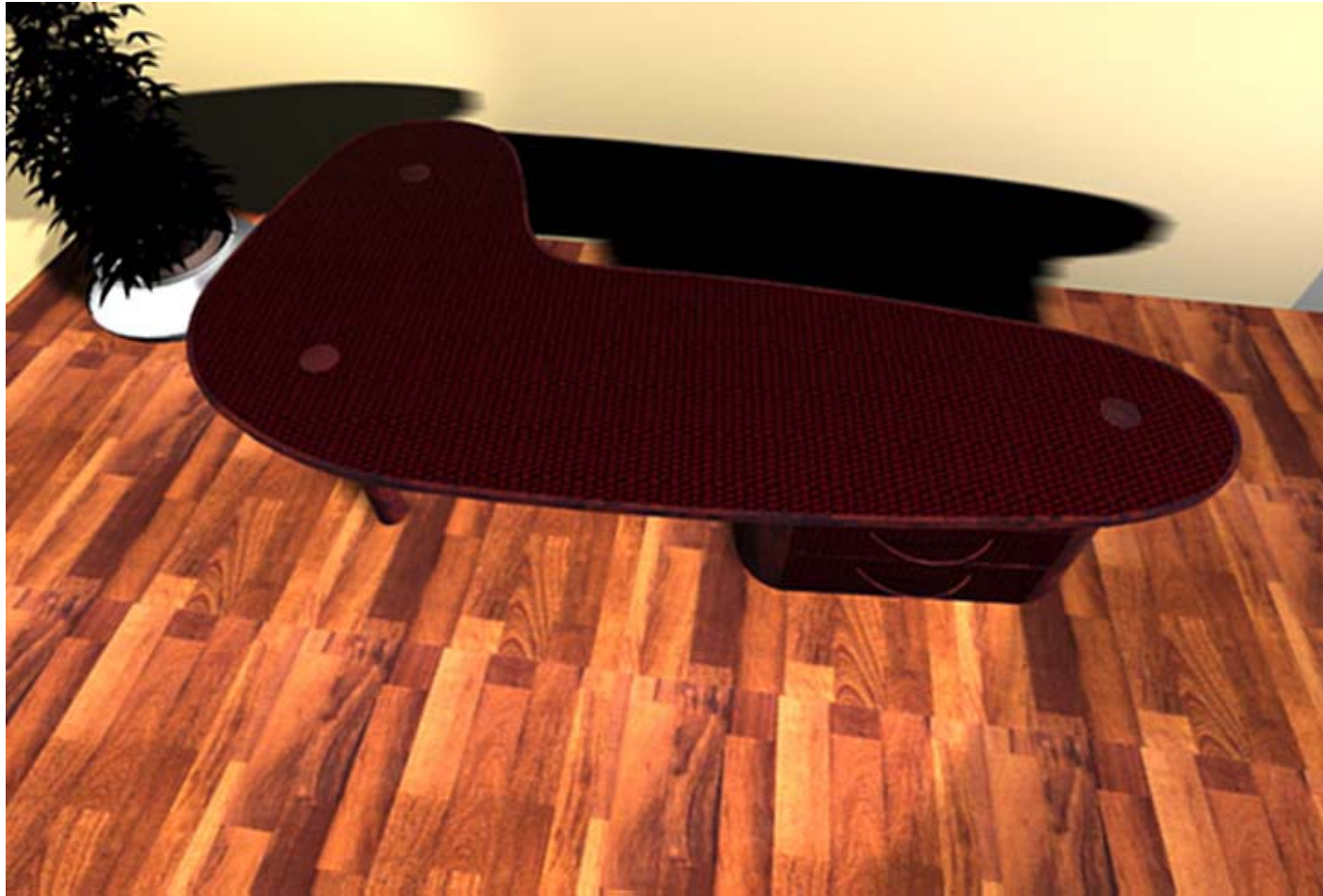
Executive Desk with Drawers



Doro Vernier



The organic , irregular shape of the executive desk and the drawers is unusual and possible due to the unique characteristics of Mykon©.



Utilising the structural properties of Mykon©, the desk doesn't need any supporting struts or supports and gives therefore a light and elegant whilst at the same time providing strength and stability.



The combination of traditional walnut with Mykon© Colour Series in red provides a warm yet modern, clean and functional look.



The drawers, which are set onto casters, pivot around the slotted-in desk leg and are accessible from all sides, whilst at the same time double up as a side table.